

Couranga



4 hrs 30 mins

Hard track

9.8 km Return

▲ 368m

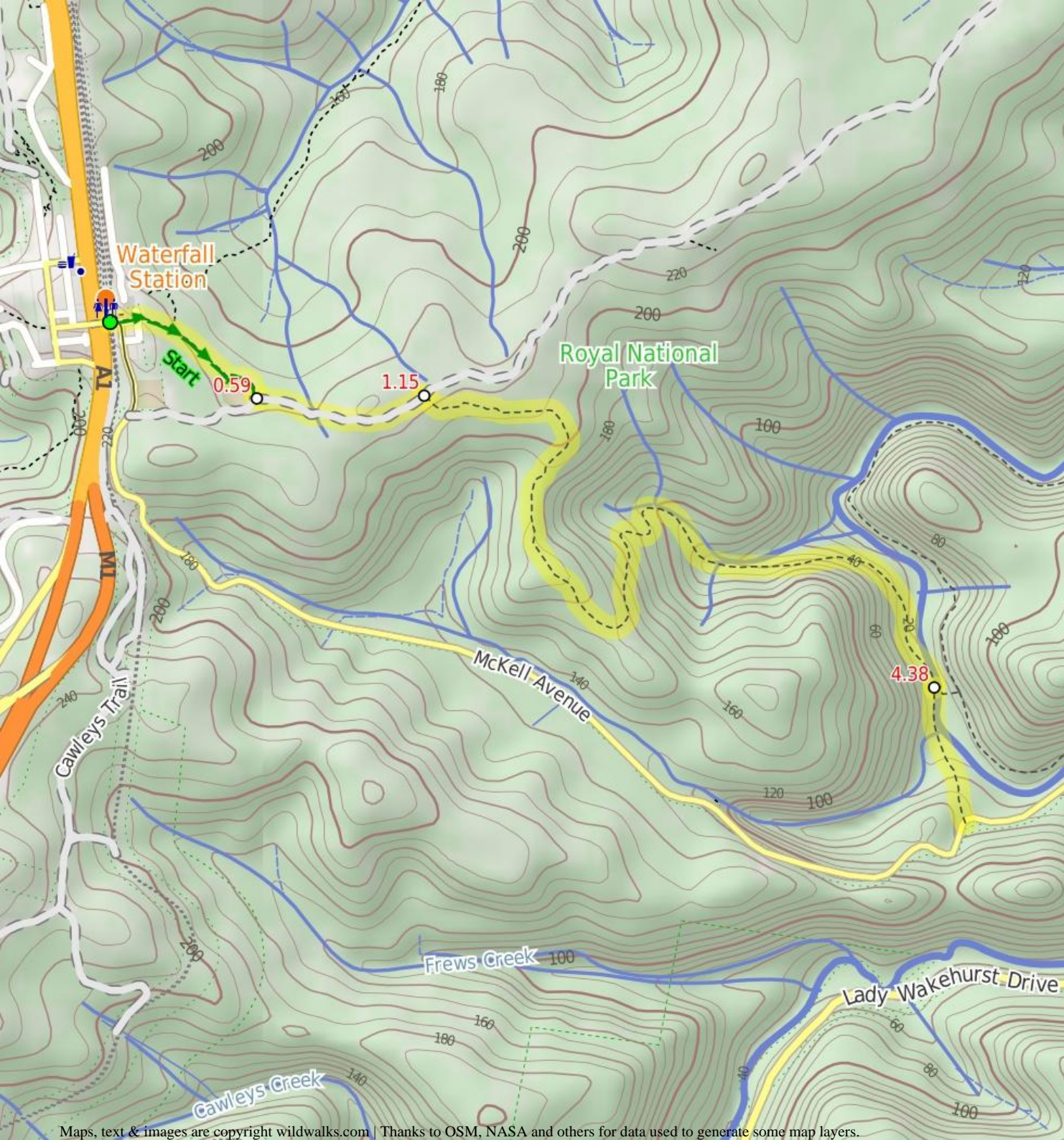


This is a pleasant walk, taking you through some of Royal National Parks more diverse ecosystems. From Waterfall Station, the walk heads through the bush and heath, before descending to the rain forest and palms on the banks of the upper Hacking River. A great walk to explore Royal National Park's floral diversity.

232m

19m

Royal National Park



Are you ready to have fun?

Please ensure you and your group are well prepared and equipped for all possible hazards and delays. Check park closures, weather information and Fire Danger Rating before setting out. Optional side trips and alternate routes noted are not included in this walk overall grade, length or time estimate. Please allow extra time for resting and exploring areas of interest. The authors, staff and owners of wildwalks take care in preparing this information but will not accept responsibility for any inconvenience, loss or injury you may experience. Please take care, have fun - Happy Walking.

Getting there You can get to Waterfall Station (gps: -34.1352, 150.9946) by car, train or bus. Car: There is free parking available.

This is a return, so you will finish back at the start.

Find up to date and more information including; travel directions, weather, park closures and walker feedback at <http://wild.tl/18>

0 | Waterfall Station

(590 m 11 mins) From the top of the ramp, this walk crosses the road bridge towards the station car park. The walk passes through the gap in the fence behind the car park, then follows the 'Uloola Falls' sign along the track through the dense scrub. After some time, the walk opens out at the cricket oval and follows the left-hand edge around to the signposted intersection of the 'Uloola Track'.

0.59 | Cricket Oval Eastern Gate

(560 m 10 mins) Veer left: From the intersection, this walk follows the 'Uloola Falls' arrow around the locked gate and along the management trail. The trail heads straight through the bushland (which gradually thins out) as the walk continues to the signposted intersection of the 'Couranga Track'.

1.15 | Int. Couranga Trk and Uloola Trk

(3.2 km 1 hr 15 mins) Turn right: From the intersection, this walk follows the sign for 'Couranga Track' along the narrow track (just to the left of the sign) down the hill, along a ridge top. The track then soon winds left, heading down the side of the ridge. The track heads down the hill to a point where it meets a creek. On the rock before the creek is a painted white arrow indicating the track direction, down the hill. The track continues for some time down the gully with the creek on the left. The track then heads around the hill crossing many creek beds as it gently descends to an intersection next to the Hacking River. The intersection is marked at the river by a 'Car Park 1km' sign.

4.38 | Int. Waterfall Ck Trk and Couranga Trk

(500 m 10 mins) Continue straight: From the intersection, this walk follows the track, keeping the creek below on the left. The track bends around to the right and continues along for about 30m, before crossing the creek at an elevated rock platform. On the opposite bank, the walk climbs up into a grassy clearing. Crossing this, the track continues up the long hill on the other side, through tall eucalyptus trees and ferns. At the top of the hill, the track flattens out and continues to the intersection of Mckell Ave.

